

CROP CONDITION & DEVELOPMENT STAGES

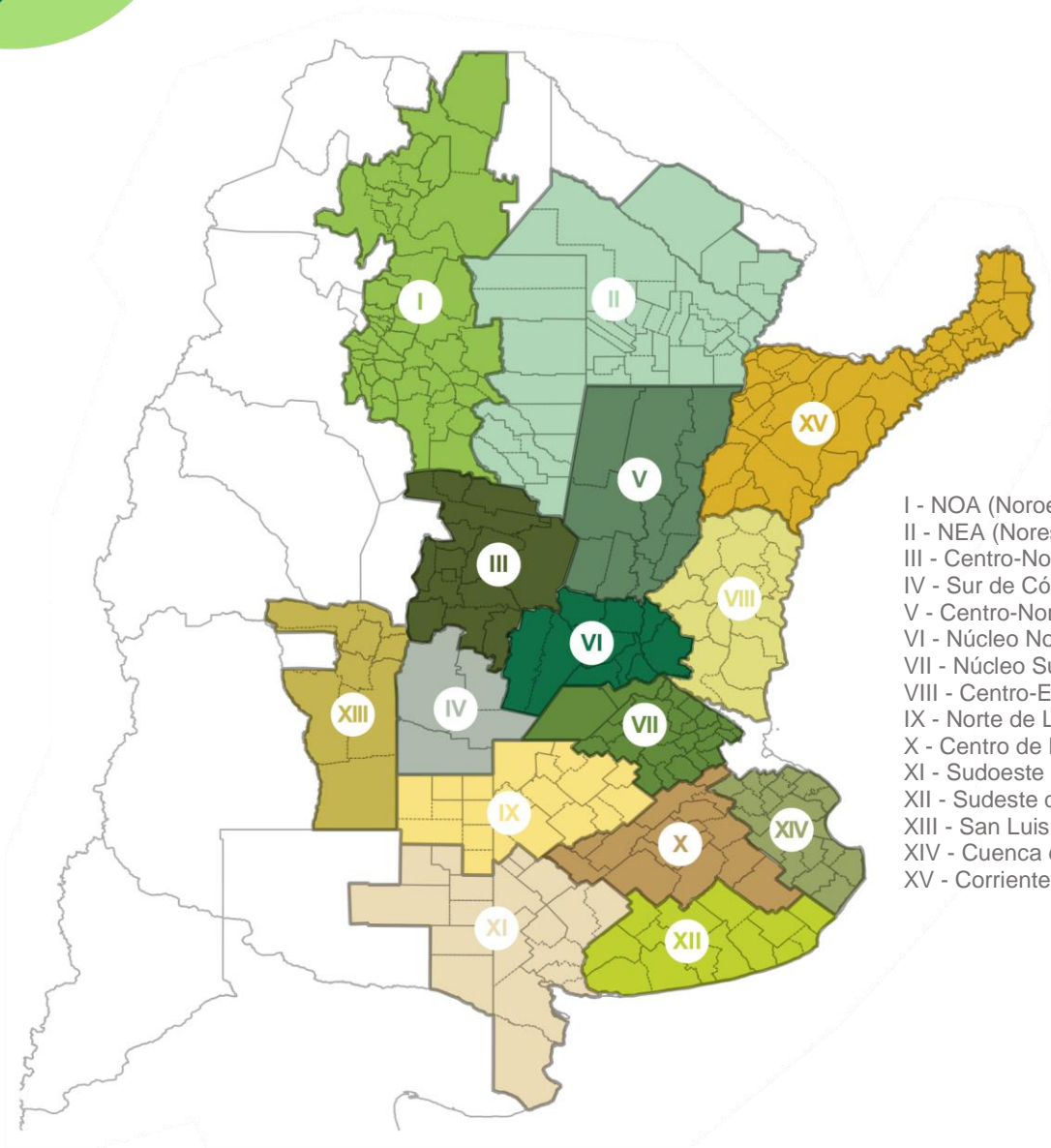
NOVEMBER, 9
2017



BUENOS AIRES GRAIN EXCHANGE
DEPARTMENT OF AGRICULTURAL
ESTIMATES

ISSN 2591-4715

DEPARTMENT & REGIONS



- I - NOA (Noroeste Argentino)
- II - NEA (Noreste Argentino)
- III - Centro-Norte de Córdoba
- IV - Sur de Córdoba
- V - Centro-Norte de Santa Fe
- VI - Núcleo Norte
- VII - Núcleo Sur
- VIII - Centro-Este de Entre Ríos
- IX - Norte de La Pampa - Oeste de Buenos Aires
- X - Centro de Buenos Aires
- XI - Sudoeste de Buenos Aires - Sur de La Pampa
- XII - Sudeste de Buenos Aires
- XIII - San Luis
- XIV - Cuenca del Salado
- XV - Corrientes - Misiones

HEAD OF DEPARTMENT

Eng. Esteban J Copati
ecopati@bc.org.ar

COORDINATOR

Eng. Gonzalo Hermida
ghermida@bc.org.ar

CROP ANALYST

Martin López
martinlopez@bc.org.ar

SATELLITE IMAGES ANALYST

Eng. María Victoria Corte
mcorte@bc.org.ar

CROP CONDITION ANALYST

Daniela Venturino
dventurino@bc.org.ar
Wheat & Sunflower

Santiago Burrone
sburrone@bc.org.ar
Corn

Eng. Ayelén Gago
amgago@bc.org.ar
Soybean

CONTACT

Av. Corrientes 123
C1043AAB - CABA
Phone: +54 11 4515 8200 | 8300
estimacionesagricolas@bc.org.ar
Twitter: @estimacionesbc

ISSN 2591-4715

CROP CONDITION & DEVELOPMENT STAGES

Findings of the survey conducted through November 9, 2017 by the Agricultural Estimates Department at the Grain Exchange. The areas under analysis in this report account for 90% of the crops planted area. The regional data is published once planting reaches 100% of the projected area.

Wheat

Wheat Condition: as of November 8, 2017

Regions		Very Poor %	Poor %	Fair %	Good %	Excellent %
I	NOA	15,0	35,0	25,0	25,0	-
II	NEA	-	-	30,0	40,0	30,0
III	Ctro N Cba	-	25,0	12,5	25,0	37,5
IV	S Cba	-	-	27,2	36,4	36,4
V	Ctro N SFe	-	32,9	20,0	14,2	32,9
VI	Núcleo Norte	-	12,4	25,0	31,3	31,3
VII	Núcleo Sur	18,2	27,2	21,4	15,0	18,2
VIII	Ctro E ER	-	-	-	-	-
IX	N LP-OBA	-	-	36,4	27,2	36,4
X	Ctro Bs As	-	-	-	100,0	-
XI	SO BA-S LP	-	11,1	11,1	33,3	44,5
XII	SE BA	-	-	55,6	33,3	11,1
XIII	San Luis	-	-	-	-	-
XIV	Cuenca Sal	-	-	-	-	-
XV	Others	-	-	-	-	-
National		3,7	14,0	25,3	31,7	25,2

Wheat Moisture Condition: as of November 8, 2017

Regions		Dry %	Poor %	Favourable %	Optimum %	Wet %
I	NOA	25,0	75,0	-	-	-
II	NEA	30,0	30,0	30,0	10,0	-
III	Ctro N Cba	-	-	60,0	40,0	-
IV	S Cba	-	36,4	36,4	9,0	18,2
V	Ctro N SFe	-	-	12,5	87,5	-
VI	Núcleo Norte	-	12,4	43,8	43,8	-
VII	Núcleo Sur	-	-	70,0	20,0	10,0
VIII	Ctro E ER	-	-	-	-	-
IX	N LP-OBA	-	-	-	27,3	72,7
X	Ctro Bs As	-	-	-	44,4	55,6
XI	SO BA-S LP	-	11,1	44,5	11,1	33,3
XII	SE BA	-	-	70,0	30,0	-
XIII	San Luis	-	-	-	-	-
XIV	Cuenca Sal	-	-	-	-	-
XV	Others	-	-	-	-	-
National		3,6	12,1	38,3	31,2	14,8

CROP CONDITION & DEVELOPMENT STAGES

Wheat Steam Extension: as of November 8, 2017

Regions		November 09, 2016 %	October 26, 2017 %	November 08, 2017 %	2012/2017 Average %
I	NOA	100,0	100,0	100,0	100,0
II	NEA	100,0	100,0	100,0	100,0
III	Ctro N Cba	100,0	100,0	100,0	100,0
IV	S Cba	100,0	100,0	100,0	100,0
V	Ctro N SFe	100,0	100,0	100,0	100,0
VI	Núcleo Norte	100,0	100,0	100,0	100,0
VII	Núcleo Sur	100,0	98,0	100,0	100,0
VIII	Ctro E ER	-	100,0	-	-
IX	N LP-OBA	100,0	91,0	100,0	100,0
X	Ctro Bs As	100,0	77,0	97,0	100,0
XI	SO BA-S LP	82,0	61,0	79,0	81,7
XII	SE BA	85,0	56,0	72,0	83,3
XIII	San Luis	-	87,0	-	-
XIV	Cuenca Sal	-	82,0	-	-
XV	Others	-	100,0	-	-
National		96,2	89,3	94,8	92,1

Wheat Heading: as of November 8, 2017

Regions		November 09, 2016 %	October 26, 2017 %	November 08, 2017 %	2012/2017 Average %
I	NOA	100,0	100,0	100,0	100,0
II	NEA	100,0	100,0	100,0	100,0
III	Ctro N Cba	100,0	75,0	100,0	98,0
IV	S Cba	73,0	56,0	75,0	72,6
V	Ctro N SFe	100,0	93,0	100,0	100,0
VI	Núcleo Norte	84,0	69,0	88,0	83,3
VII	Núcleo Sur	80,0	55,0	75,0	78,9
VIII	Ctro E ER	-	77,0	-	-
IX	N LP-OBA	71,0	35,0	65,0	69,2
X	Ctro Bs As	63,0	25,0	57,0	64,2
XI	SO BA-S LP	59,0	19,0	51,0	58,0
XII	SE BA	37,0	10,0	45,0	39,1
XIII	San Luis	-	38,0	-	-
XIV	Cuenca Sal	-	30,0	-	-
XV	Others	-	80,0	-	-
National		77,1	57,0	78,2	68,2

CROP CONDITION & DEVELOPMENT STAGES

Wheat Ripening: as of November 8, 2017

Regions		November 09, 2016 %	October 26, 2017 %	November 08, 2017 %	2012/2017 Average %
I	NOA	96,0	82,0	97,0	95,0
II	NEA	72,0	65,0	82,0	70,0
III	Ctro N Cba	63,0	20,0	61,0	64,0
IV	S Cba	23,0	4,0	25,0	21,4
V	Ctro N SFe	82,0	48,0	80,0	83,3
VI	Núcleo Norte	53,0	25,0	55,0	54,8
VII	Núcleo Sur	30,0	8,0	29,0	32,6
VIII	Ctro E ER	-	35,0	-	-
IX	N LP-OBA	2,0	-	-	4,2
X	Ctro Bs As	-	-	-	2,1
XI	SO BA-S LP	-	-	7,0	-
XII	SE BA	-	-	-	-
XIII	San Luis	-	-	-	-
XIV	Cuenca Sal	-	-	-	-
XV	Others	-	40,0	-	-
National		34,7	21,0	39,8	25,0

Wheat Mature: as of November 8, 2017

Regions		November 09, 2016 %	October 26, 2017 %	November 08, 2017 %	2012/2017 Average %
I	NOA	77,0	60,0	76,0	75,0
II	NEA	51,0	31,0	55,0	50,0
III	Ctro N Cba	19,0	-	17,0	20,0
IV	S Cba	3,0	-	-	5,0
V	Ctro N SFe	32,0	15,0	28,0	30,8
VI	Núcleo Norte	5,0	5,0	12,0	3,9
VII	Núcleo Sur	-	-	-	1,5
VIII	Ctro E ER	-	-	-	-
IX	N LP-OBA	-	-	-	-
X	Ctro Bs As	-	-	-	-
XI	SO BA-S LP	-	-	-	-
XII	SE BA	-	-	-	-
XIII	San Luis	-	-	-	-
XIV	Cuenca Sal	-	-	-	-
XV	Others	-	16,0	-	-
National		12,5	7,5	14,6	7,6

CROP CONDITION & DEVELOPMENT STAGES

Sunflower

Sunflower Planted: as of November 8, 2017

Regions		November 09, 2016 %	October 26, 2017 %	November 08, 2017 %	2012/2017 Average %
I	NOA		-	-	
II	NEA	100,0	100,0	100,0	100,0
III	Ctro N Cba	100,0	100,0	100,0	82,5
IV	S Cba	80,0	55,0	95,0	64,2
V	Ctro N SFe	100,0	100,0	100,0	100,0
VI	Núcleo Norte	100,0	100,0	100,0	88,5
VII	Núcleo Sur	80,0	42,0	92,0	77,2
VIII	Ctro E ER	100,0	100,0	100,0	90,8
IX	N LP-OBA	55,0	17,0	60,0	68,0
X	Ctro Bs As	65,0	15,0	58,0	70,3
XI	SO BA-S LP	35,0	19,0	32,0	43,6
XII	SE BA	50,0	21,0	55,0	47,2
XIII	San Luis	90,0	48,0	95,0	64,0
XIV	Cuenca Sal	70,0	25,0	70,0	65,7
XV	Others	100,0	100,0	100,0	84,3
National		66,7	50,6	69,0	64,7

Sunflower Condition: as of November 8, 2017

Regions		Very Poor %	Poor %	Fair %	Good %	Excellent %
I	NOA	-	-	-	-	-
II	NEA	-	-	30,0	40,0	30,0
III	Ctro N Cba	-	-	-	-	-
IV	S Cba	-	-	-	-	-
V	Ctro N SFe	-	-	12,5	62,5	25,0
VI	Núcleo Norte	-	-	-	-	-
VII	Núcleo Sur	-	-	-	-	-
VIII	Ctro E ER	-	-	-	-	-
IX	N LP-OBA	-	-	-	-	-
X	Ctro Bs As	-	-	-	-	-
XI	SO BA-S LP	-	-	-	-	-
XII	SE BA	-	-	-	-	-
XIII	San Luis	-	-	-	-	-
XIV	Cuenca Sal	-	-	-	-	-
XV	Others	-	-	-	-	-
National		0,3	0,6	14,6	68,3	16,2

CROP CONDITION & DEVELOPMENT STAGES

Sunflower Moisture Condition: as of November 8, 2017

Regions		Dry %	Poor %	Favourable %	Optimum %	Wet %
I	NOA	-	-	-	-	-
II	NEA	30,0	30,0	30,0	10,0	-
III	Ctro N Cba	-	-	-	-	-
IV	S Cba	-	-	-	-	-
V	Ctro N SFe	-	11,1	33,3	55,6	-
VI	Núcleo Norte	-	-	-	-	-
VII	Núcleo Sur	-	-	-	-	-
VIII	Ctro E ER	-	-	-	-	-
IX	N LP-OBA	-	-	-	-	-
X	Ctro Bs As	-	-	-	-	-
XI	SO BA-S LP	-	-	-	-	-
XII	SE BA	-	-	-	-	-
XIII	San Luis	-	-	-	-	-
XIV	Cuenca Sal	-	-	-	-	-
XV	Others	-	-	-	-	-
National		9,2	12,2	34,2	27,2	17,2

Sunflower Leaf Development: as of November 8, 2017

Regions		November 09, 2016 %	October 26, 2017 %	November 08, 2017 %	2012/2017 Average %
I	NOA	-	-	-	-
II	NEA	100,0	100,0	100,0	100,0
III	Ctro N Cba	-	-	-	-
IV	S Cba	-	-	-	-
V	Ctro N SFe	100,0	100,0	100,0	100,0
VI	Núcleo Norte	-	-	-	-
VII	Núcleo Sur	-	-	-	-
VIII	Ctro E ER	-	-	-	-
IX	N LP-OBA	-	-	-	-
X	Ctro Bs As	-	-	-	-
XI	SO BA-S LP	-	-	-	-
XII	SE BA	-	-	-	-
XIII	San Luis	-	-	-	-
XIV	Cuenca Sal	-	-	-	-
XV	Others	-	-	-	-
National		58,8	68,3	66,1	48,5

CROP CONDITION & DEVELOPMENT STAGES

Sunflower Flowerbud Stage: as of November 8, 2017

Regions		November 09, 2016 %	October 26, 2017 %	November 08, 2017 %	2012/2017 Average %
I	NOA	-	-	-	-
II	NEA	68,0	75,0	80,0	70,0
III	Ctro N Cba	-	-	-	-
IV	S Cba	-	-	-	-
V	Ctro N SFe	61,0	46,0	62,0	58,7
VI	Núcleo Norte	-	-	-	-
VII	Núcleo Sur	-	-	-	-
VIII	Ctro E ER	-	-	-	-
IX	N LP-OBA	-	-	-	-
X	Ctro Bs As	-	-	-	-
XI	SO BA-S LP	-	-	-	-
XII	SE BA	-	-	-	-
XIII	San Luis	-	-	-	-
XIV	Cuenca Sal	-	-	-	-
XV	Others	-	-	-	-
National		31,9	37,7	37,8	27,3

Sunflower Flowering Stage: as of November 8, 2017

Regions		November 09, 2016 %	October 26, 2017 %	November 08, 2017 %	2012/2017 Average %
I	NOA	-	-	-	-
II	NEA	52,0	29,0	53,0	50,0
III	Ctro N Cba	-	-	-	-
IV	S Cba	-	-	-	-
V	Ctro N SFe	14,0	5,0	18,0	16,8
VI	Núcleo Norte	-	-	-	-
VII	Núcleo Sur	-	-	-	-
VIII	Ctro E ER	-	-	-	-
IX	N LP-OBA	-	-	-	-
X	Ctro Bs As	-	-	-	-
XI	SO BA-S LP	-	-	-	-
XII	SE BA	-	-	-	-
XIII	San Luis	-	-	-	-
XIV	Cuenca Sal	-	-	-	-
XV	Others	-	-	-	-
National		17,7	11,4	20,0	15,4

CROP CONDITION & DEVELOPMENT STAGES

Corn

Early Corn Planted: as of November 8, 2017

Regions	November 09, 2016 %	October 26, 2017 %	November 08, 2017 %	2012/2017 Average %
I NOA	-	-	-	-
II NEA	-	-	-	-
III Ctro N Cba	100,0	100,0	100,0	88,0
IV S Cba	100,0	100,0	100,0	85,6
V Ctro N SFe	100,0	100,0	100,0	96,0
VI Núcleo Norte	100,0	100,0	100,0	97,0
VII Núcleo Sur	100,0	100,0	100,0	96,0
VIII Ctro E ER	100,0	100,0	100,0	99,0
IX N LP-OBA	100,0	90,0	100,0	92,4
X Ctro Bs As	100,0	80,0	95,0	75,2
XI SO BA-S LP	90,0	55,0	80,0	53,6
XII SE BA	95,0	40,0	75,0	42,2
XIII San Luis	100,0	100,0	100,0	62,0
XIV Cuenca Sal	100,0	85,0	100,0	73,8
XV Others	100,0	100,0	100,0	84,0
National	81,6	60,6	64,7	74,8

Early Corn Condition: as of November 8, 2017

Regions	Very Poor %	Poor %	Fair %	Good %	Excellent %
I NOA	-	-	-	-	-
II NEA	-	-	-	-	-
III Ctro N Cba	-	-	11,1	66,7	22,2
IV S Cba	-	7,0	20,0	63,0	10,0
V Ctro N SFe	-	-	11,1	66,7	22,2
VI Núcleo Norte	-	-	-	60,0	40,0
VII Núcleo Sur	-	-	11,1	81,7	7,2
VIII Ctro E ER	-	-	-	-	-
IX N LP-OBA	-	5,0	11,1	83,9	-
X Ctro Bs As	-	10,0	10,0	70,0	10,0
XI SO BA-S LP	-	-	-	-	-
XII SE BA	-	-	-	-	-
XIII San Luis	-	-	15,0	80,0	5,0
XIV Cuenca Sal	-	-	-	-	-
XV Others	-	-	-	-	-
National		1,9	7,2	76,4	14,6

CROP CONDITION & DEVELOPMENT STAGES

Early Corn Moisture Condition: as of November 8, 2017

Regions	Dry %	Poor %	Favourable %	Optimum %	Wet %
I NOA	-	-	-	-	-
II NEA	-	-	-	-	-
III Ctro N Cba	-	22,3	44,4	33,3	-
IV S Cba	-	27,3	44,0	10,5	18,2
V Ctro N SFe	-	-	11,1	88,9	-
VI Núcleo Norte	-	13,3	46,7	40,0	-
VII Núcleo Sur	-	-	66,7	11,1	22,2
VIII Ctro E ER	-	-	-	-	-
IX N LP-OBA	-	-	-	11,1	88,9
X Ctro Bs As	-	-	10,0	60,0	30,0
XI SO BA-S LP	-	-	-	-	-
XII SE BA	-	-	-	-	-
XIII San Luis	-	-	90,0	10,0	-
XIV Cuenca Sal	-	-	-	-	-
XV Others	-	-	-	-	-
National	-	6,5	38,1	28,0	27,3

Early Corn Leaf Development: as of November 8, 2017

Regions	November 09, 2016 %	October 26, 2017 %	November 08, 2017 %	2012/2017 Average %
I NOA	-	-	-	-
II NEA	-	-	-	-
III Ctro N Cba	99,0	66,7	97,0	96,0
IV S Cba	100,0	83,0	98,0	92,5
V Ctro N SFe	100,0	100,0	100,0	100,0
VI Núcleo Norte	100,0	100,0	100,0	92,0
VII Núcleo Sur	100,0	91,7	100,0	100,0
VIII Ctro E ER	-	-	-	-
IX N LP-OBA	100,0	40,0	88,9	98,2
X Ctro Bs As	92,0	28,6	75,0	83,5
XI SO BA-S LP	-	-	-	-
XII SE BA	-	-	-	-
XIII San Luis	100,0	62,0	99,0	79,3
XIV Cuenca Sal	-	-	-	-
XV Others	-	-	-	-
National	94,9	69,6	91,8	92,5

CROP CONDITION & DEVELOPMENT STAGES

Early Corn Pollination: as of November 8, 2017

Regions		November 09, 2016 %	October 26, 2017 %	November 08, 2017 %	2012/2017 Average %
I	NOA	-	-	-	-
II	NEA	-	-	-	-
III	Ctro N Cba	-	-	-	2,5
IV	S Cba	-	-	-	8,0
V	Ctro N SFe	32,0	8,0	15,0	34,3
VI	Núcleo Norte	13,0	-	6,7	8,0
VII	Núcleo Sur	5,0	-	-	7,3
VIII	Ctro E ER	14,0	-	-	8,2
IX	N LP-OBA	-	-	-	-
X	Ctro Bs As	-	-	-	-
XI	SO BA-S LP	-	-	-	-
XII	SE BA	-	-	-	-
XIII	San Luis	-	-	-	-
XIV	Cuenca Sal	-	-	-	-
XV	Others	62,0	37,0	60,0	70,0
National		5,6	0,6	2,6	6,2

CROP CONDITION & DEVELOPMENT STAGES

Vegetation Change detection map

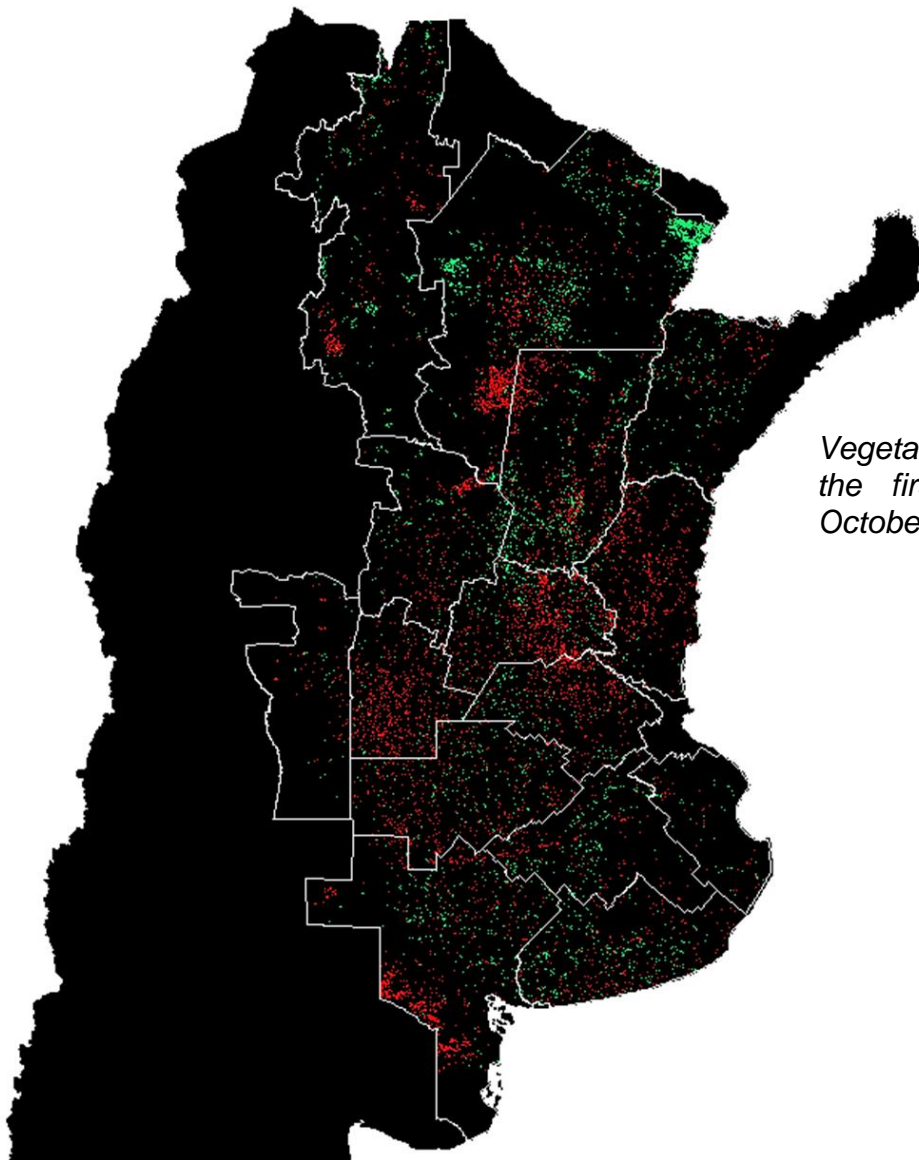
The following maps were drawn based on temporal MODIS Vegetation indices, which provided time-space comparisons of the crop condition, related to the foliar area, the photosynthesis activity and to the canopy architecture.

The index value may vary according to the soil use, condition and development of the vegetation cover, soil moisture and to regional climatic conditions.

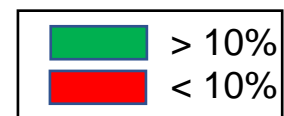
These properties have turned the green index into a valuable tool for the assessment of vegetation cover, as well as for the study of the classification and dynamics of vegetation and its phenological aspect.

The index makes it possible to survey the places where vegetation cover is under water stress or when the crop is close to harvest, in which case, low indices of vegetations are observed. On the contrary, high vegetation index values are related to vegetation cover in active growth and good sanitary condition.

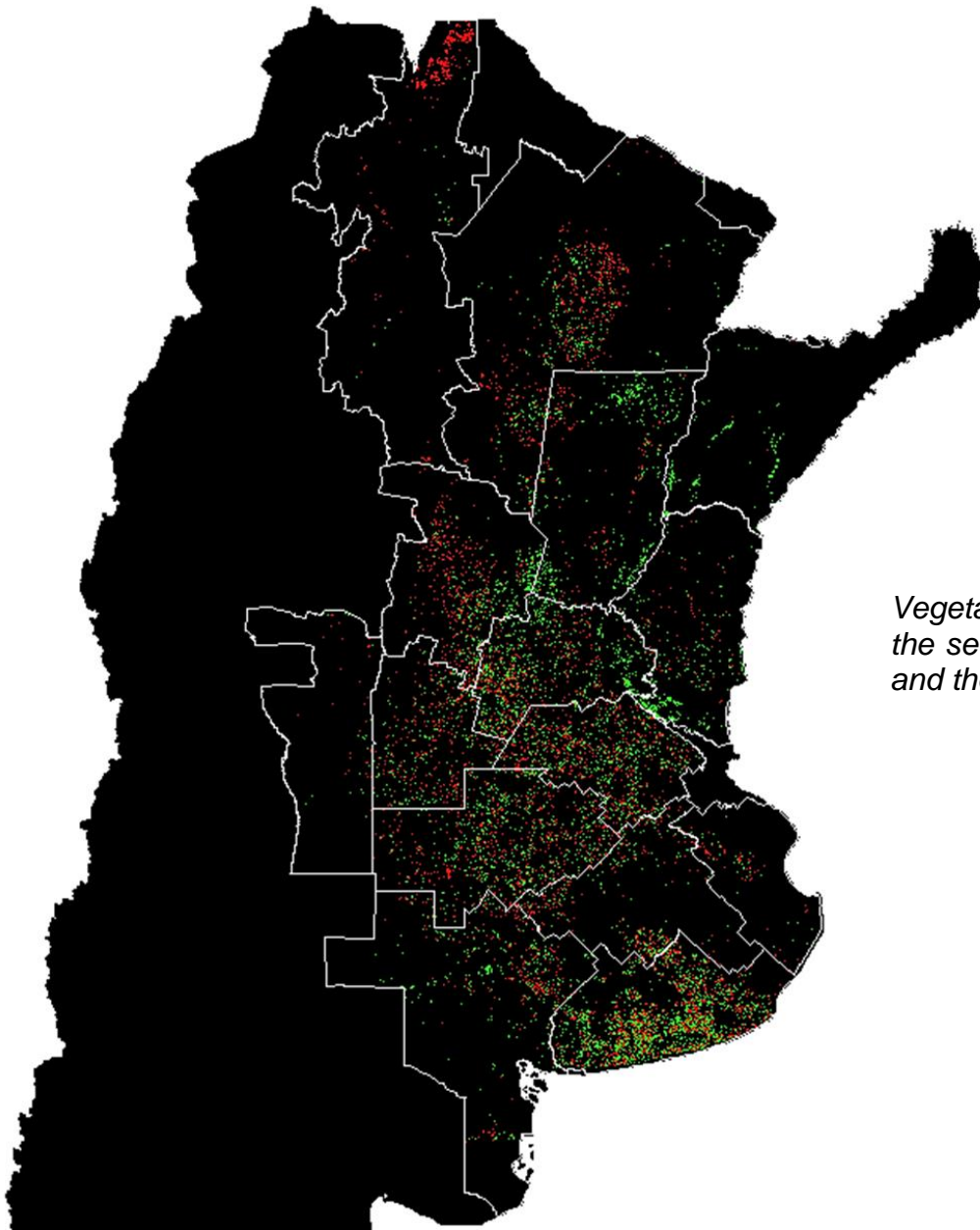
Departing from this index, fortnightly changes were detected compared to both, the same and previous season. Red areas in maps evidence a decrease above 10% in the vegetation index, while the green areas indicate a rise above 10% of the vegetation index.



Vegetation index difference between the first and second fortnight in October, 2017



CROP CONDITION & DEVELOPMENT STAGES



Vegetation index difference between the second fortnight in October, 2017 and the same fortnight YoY

